

PPP 22

Superficie Lorda Appartamento

$$= \text{Mq } 76.30 + 82.05 = \text{Mq } 158.35$$

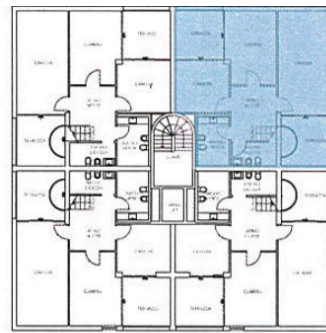
Superficie Terrazze

$$= \text{Mq } (9.60 + 9.60 + 9.60) / 2 = \text{Mq } 14.40$$

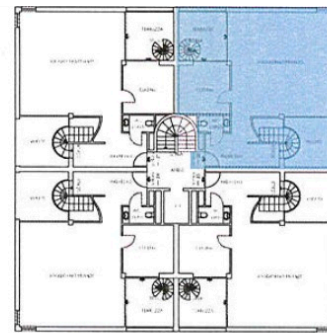
Superficie Tetto Terrazza

$$= \text{Mq } 76.05 / 2 = \text{Mq } 38.00$$

TOTALE SUPERFICIE COMMERCIALE PPP 22 = Mq 210.75

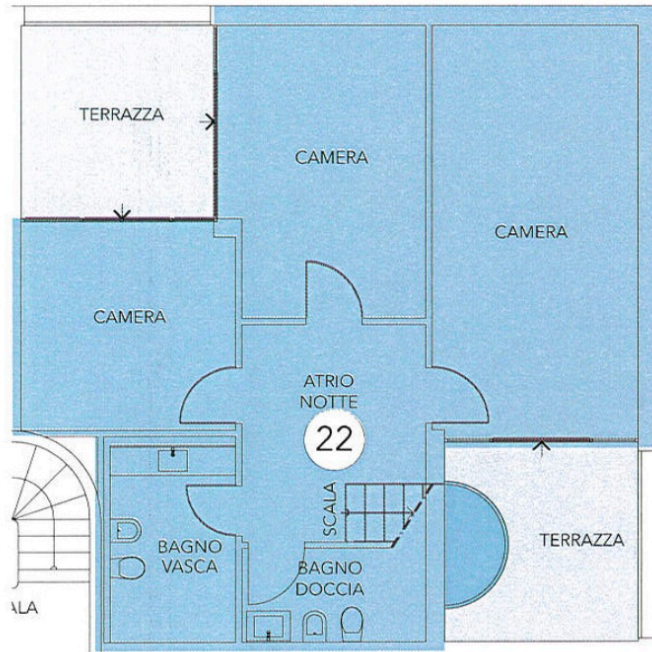


Piano QUINTO

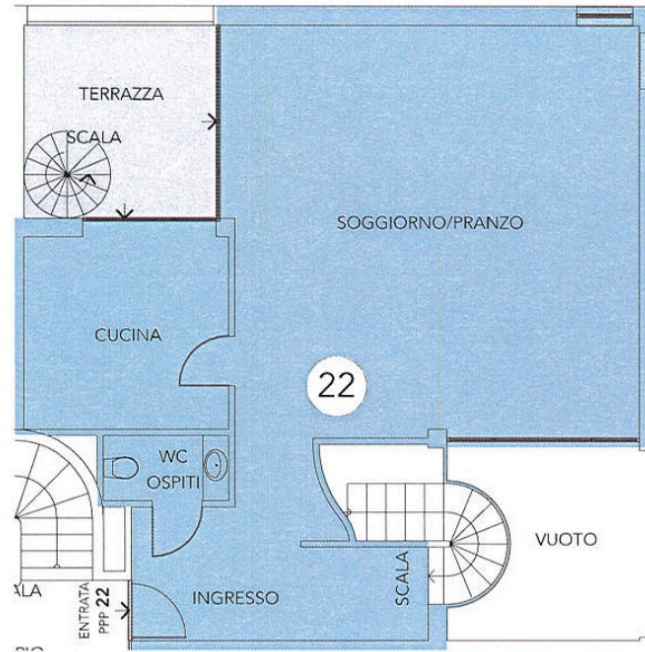


Piano SESTO

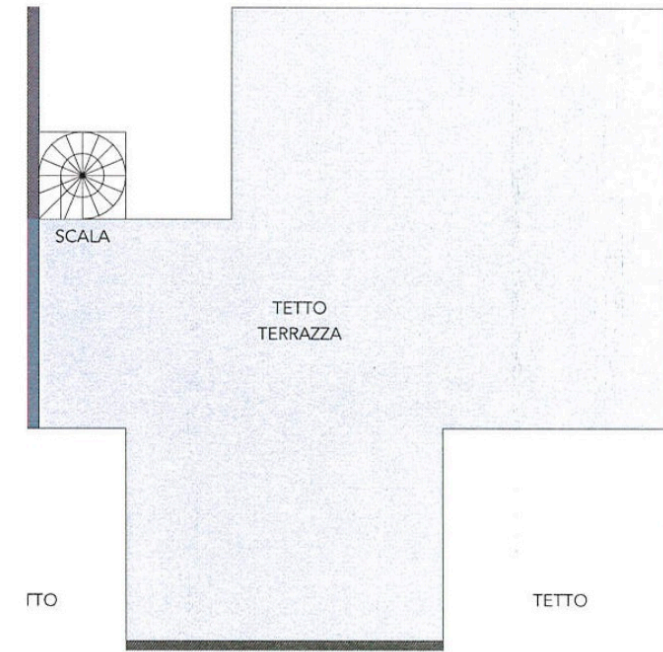
PA



Piano QUINTO



Piano SESTO



Piano TETTO