

PPP 17

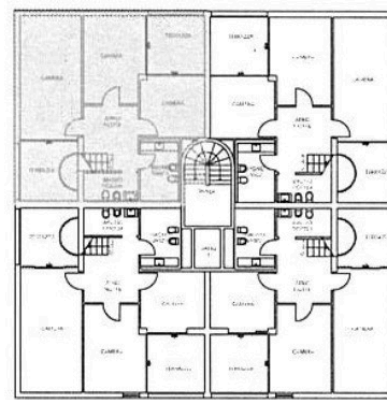
Superficie Lorda Appartamento

$$= \text{Mq } 76.30 + 82.05 = \text{Mq } 158.35$$

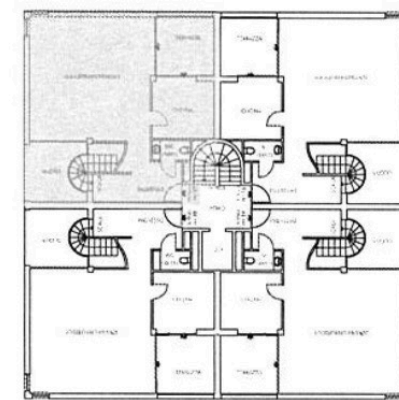
Superficie Terrazze

$$= \text{Mq } (9.60 + 9.60 + 9.60) / 2 = \text{Mq } 14.40$$

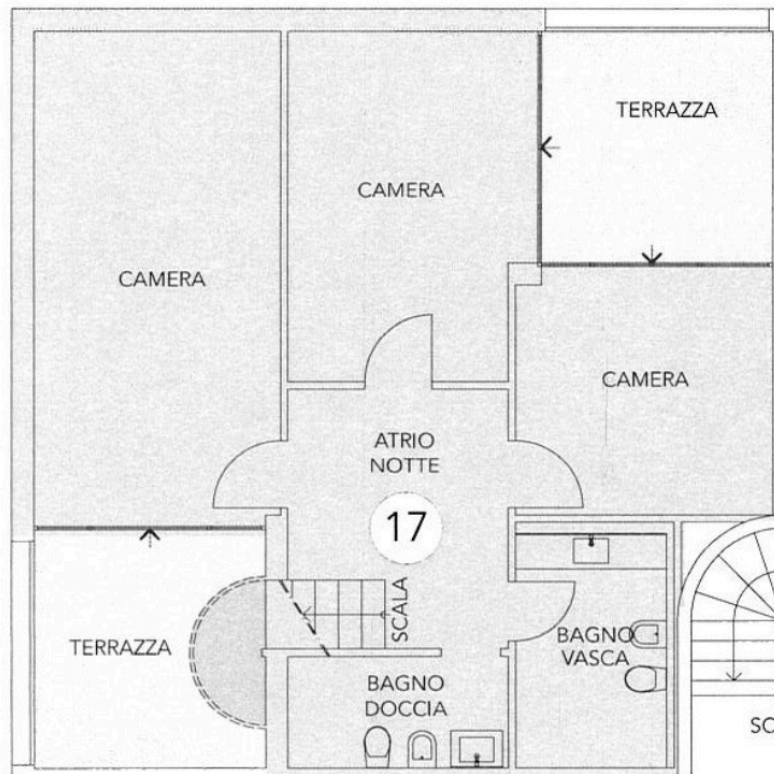
TOTALE SUPERFICIE COMMERCIALE PPP 17 = Mq 172.75



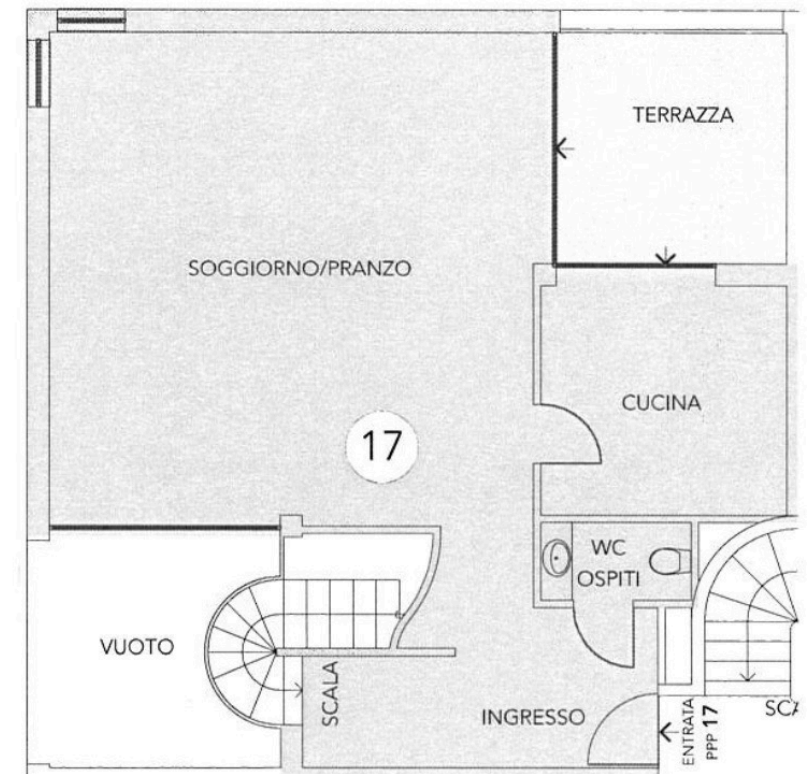
Piano TERZO



Piano QUARTO



Piano TERZO



Piano QUARTO