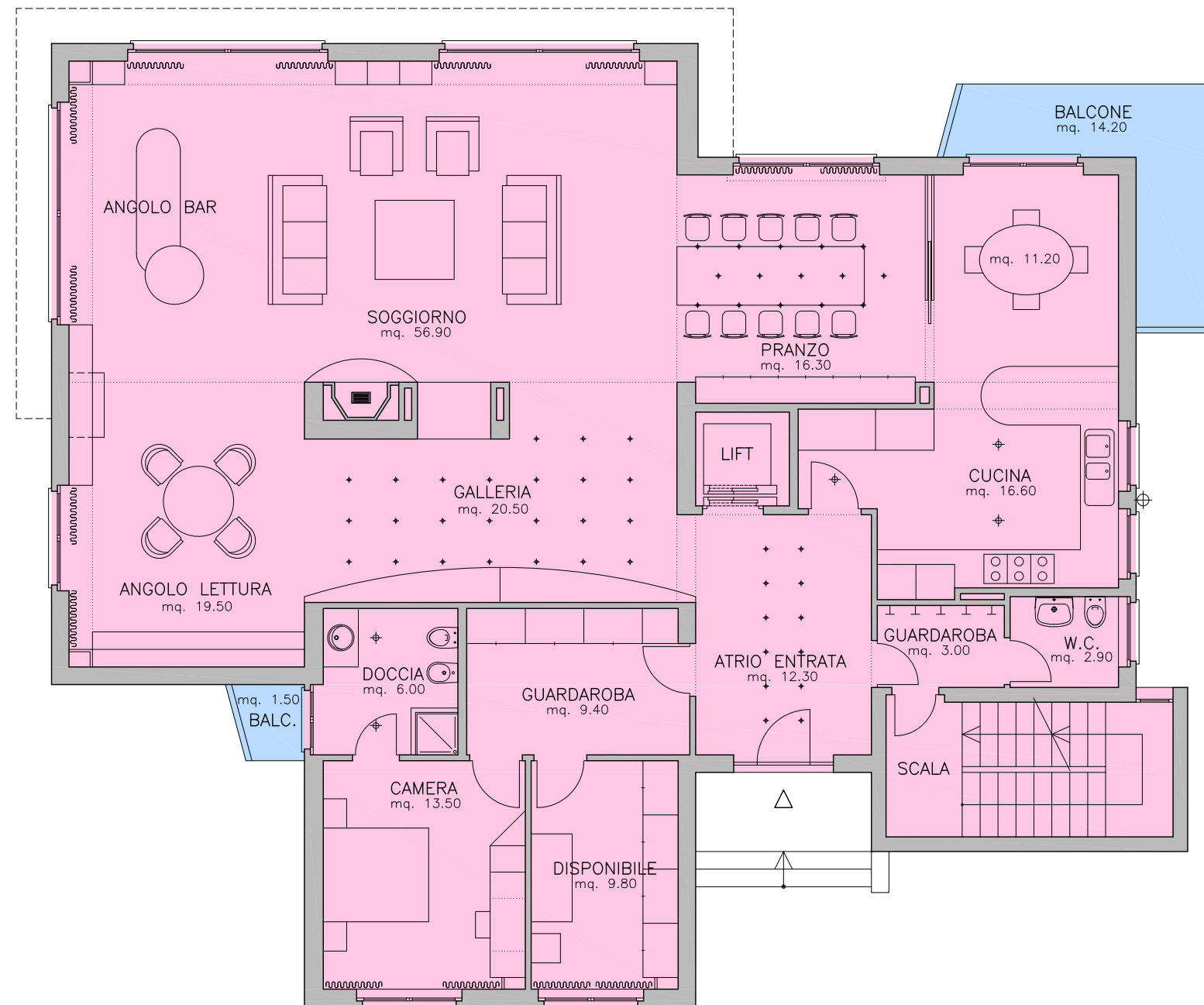


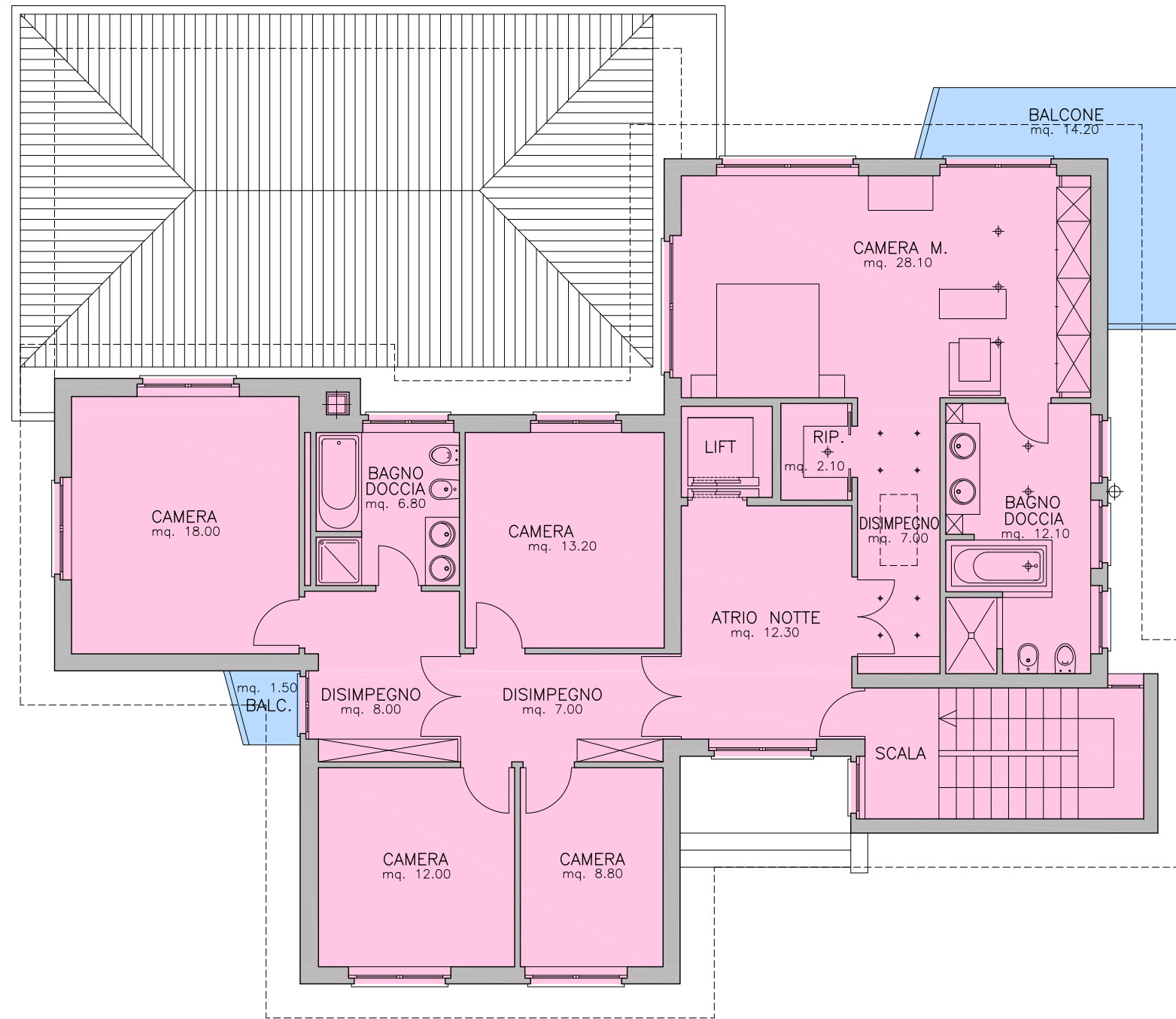
- COSTRUZIONE 200 mq
- PORTICO 50 mq

PIANO SEMINTERRATO



| | | |
|---|------------|--------|
| | ABITAZIONE | 245 mq |
| | BALCONI | 12 mq |

PIANO TERRENO



| | | |
|--|------------|--------|
| | ABITAZIONE | 180 mq |
| | BALCONI | 12 mq |

PRIMO PIANO